

MONTHLY MEMBERSHIP PROGRESS REPORT

LOCATION NEPAL

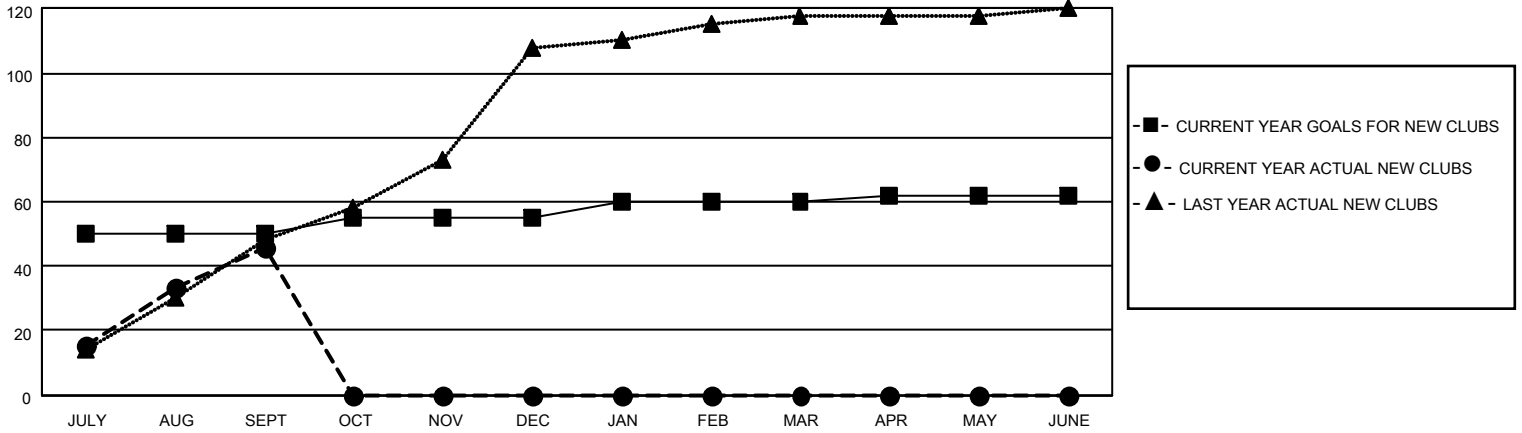
District 325B1

Results as of: 9/30/2020

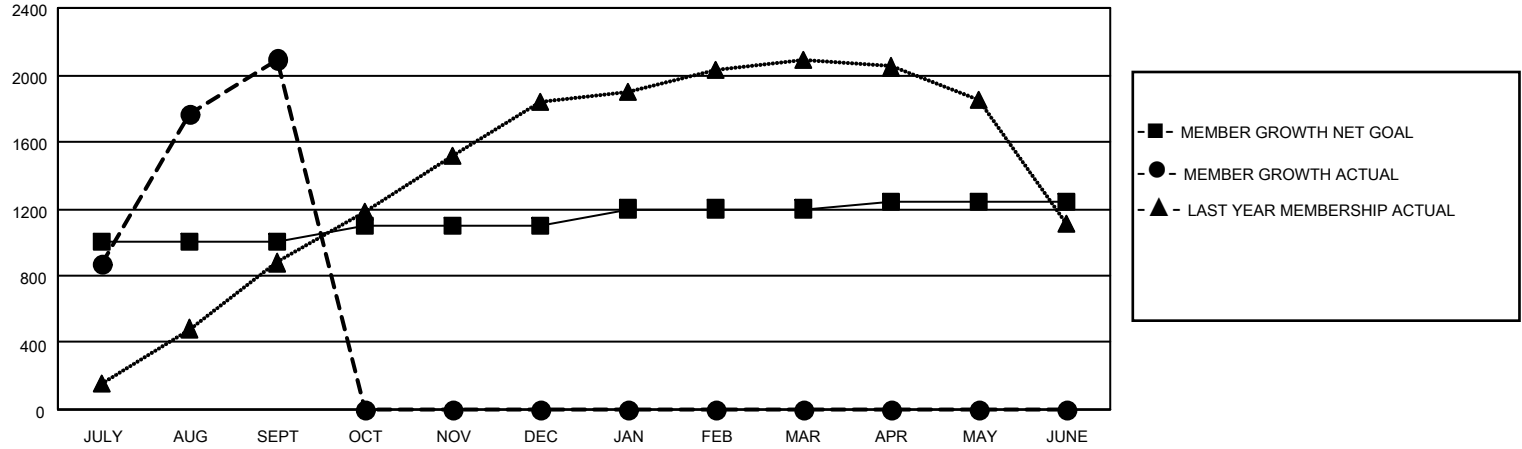
| Clubs | | | |
|-----------------------|---------------|-----------|---------------|
| RESULTS FOR 2020-2021 | | | |
| QUARTER | NEW CLUB GOAL | NEW CLUBS | DROPPED CLUBS |
| JULY/AUG/SEPT | 50 | 46 | 1 |
| OCT/NOV/DEC | 5 | 0 | 0 |
| JAN/FEB/MAR | 5 | 0 | 0 |
| APR/MAY/JUNE | 2 | 0 | 0 |

| Members | | | |
|-----------------------|------------------------|----------------------|--|
| RESULTS FOR 2020-2021 | | | |
| QUARTER | MEMBER GROWTH NET GOAL | MEMBER GROWTH ACTUAL | DROPPED MEMBERS ACTUAL (including transfers) |
| JULY/AUG/SEPT | 1000 | 2354 | 229 |
| OCT/NOV/DEC | 100 | 0 | 0 |
| JAN/FEB/MAR | 100 | 0 | 0 |
| APR/MAY/JUNE | 40 | 0 | 0 |

GOALS AND ACTUAL NEW CLUBS CUMULATIVE



GOALS AND ACTUAL MEMBERS CUMULATIVE



| | |
|-------------------------|------------|
| DROPPED CLUBS: 1 | |
| DROPPED MEMBERS | |
| DECEASED | 1 |
| CLUB CANCELLED | 0 |
| OTHER | 228 |
| TOTAL | 229 |

273 CLUBS OF 525 ADDED 1 OR MORE NEW MEMBERS

[CLICK HERE FOR CUMULATIVE MEMBERSHIP DATA](#)

| <u>GENDER DISTRIBUTION</u> | |
|----------------------------|-----------------|
| MALE | 10,261 (73.87%) |
| FEMALE | 3,630 (26.13%) |

| | |
|---------------------------------|--------|
| TOTAL FAMILY UNIT MEMBERS | 10,300 |
| FAMILY MEMBERS PAYING HALF DUES | 6,693 |